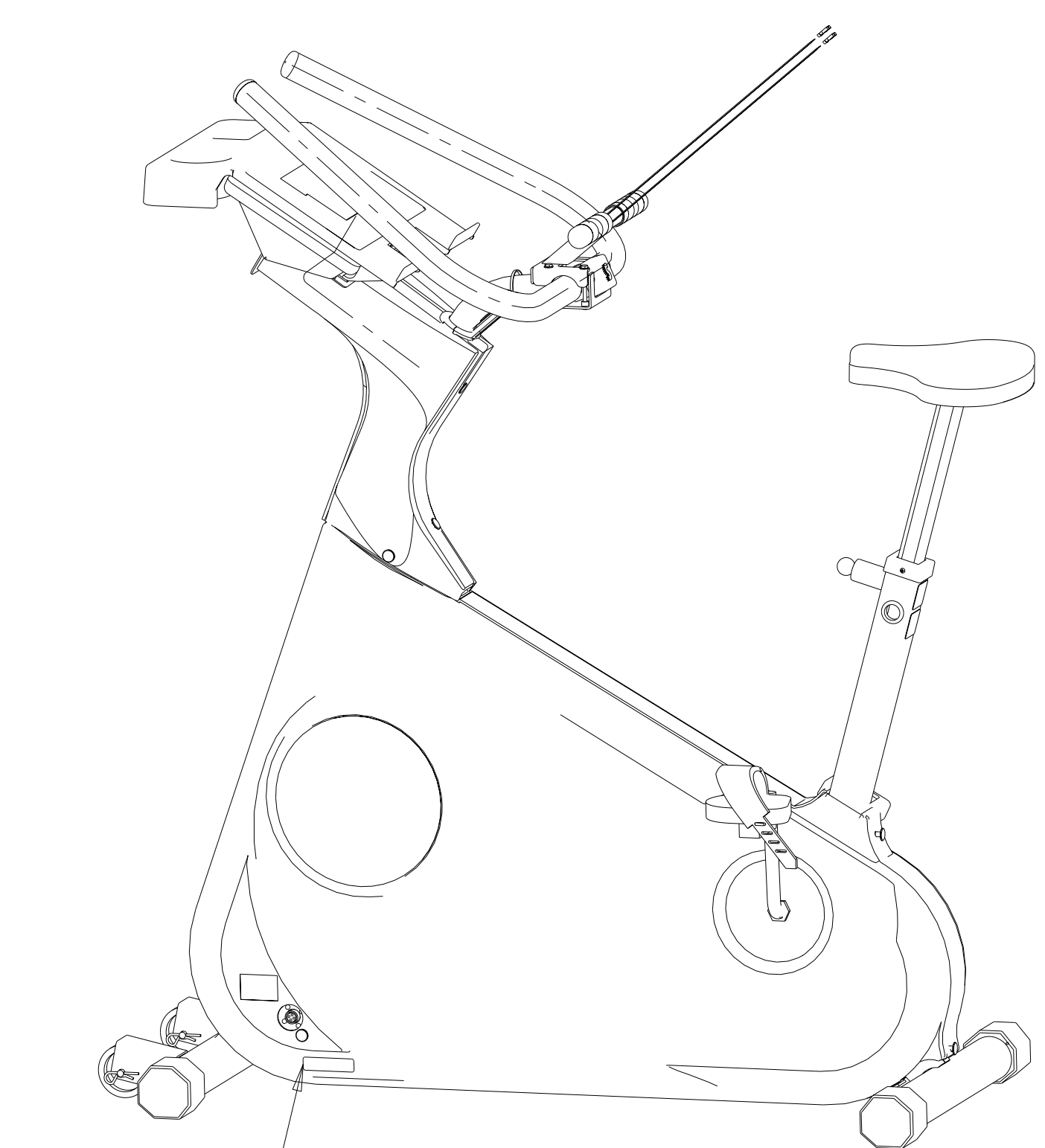


BOM FOR ASSEMBLY 24912		
COMPONENT	DESCRIPTION	QTY
13547	WASHER, #10, INTERNAL TOOTH LOCK	2
13572	ASSY, PCB, POWER CONTROL BOARD	1
13580	WASHER, #8 SAE FLAT	6
13584	CABLE, ALTERNATOR, 3300CE/3900RC	1
13587	ASSY, MAIN POWER, 3300CE/3900RC	1
13588	CABLE, BATTERY, 3300CE/3900RC	1
13596	WASHER, SHOULDER, NYLON, .390 X .50	1
14123	BATTERY, 6V	1
15108	SCREW, 8-32 X 1/2 PHILLIPS	2
20423	TYRAP, 1/8 X 7.515	1
20507	POWER CORD, EUROPEAN	1
20863	GROMMET, .50 I.D.	1
21146	GROMMET, GRO-I-UL	2
21204	ASSY, DIODE	1
21273	DECAL, DISTRIBUTOR, GERMAN	1
21363	FASTENER, CHRISTMASTREE, PLASTIC	2
21442	MANUAL, OWNER'S, 3300/3900, ENG	1
21487	DECAL, LEG LEVELING	1
21489	BRACKET, MOUNTING, BATTERY	1
21764	PLUG, .812 DIA. HOLE, NYLON	1
21765	CAP, HEART RATE	1
21772	ASSY, HANDLE, LONG, STRATUS	1
21774	PIN, HITCH	2
21989	ASSY, SEAT POST, 3000 CE	1
21990	SEAT, 3000 CE	1
21991	INSERT, FOAM, SEAT, 3000 CE	1
22022	NUT, 1/4-20 NC FINISH HEX	4
22026	SCREW, 1/4-20 X 1.00, HEX HD CAP	1
22027	WASHER, .250 SPLIT LOCK	9
22029	NUT, .375-16, NYLON INSERT	6
22030	WASHER, 3/8 USS FLAT	10
22032	NUT, 5/16-18 NC NYLON INSERT HEX	1
22036	NUT, .250-.20, NYLON INSERT	3
22038	WASHER, .250 USS FLAT	9
22075	WASHER, .312 USS FLAT	2
22083	PLUG, BUTTON, 7/8	1
22086	RIVET, PANEL	20
22109	WASHER, #8 INTERNAL TOOTH LOCK	5
22122	SCREW, 8 X 1/2 SLOT HEX	1
22134	SCREW, #8-32 X .38, PHIL PAN HD	2
22138	WASHER, .250 INTERNAL LOCK	2
22142	WASHER, FLAT, OD.63, ID.39	1
22162	SCREW, .250-20 X .75, HEX HD CAP	6
22196	SCREW, .375-16 X 2.75, HEX HD CAP	2
22242	SCREW, .375-16 X .75, HEX HD CAP	2
22296	WASHER, ALUM., .225 ID X .497 OD	1
22322	ASSY, PEDALS, W/STRAPS, SPIN. SYS.	1
22326	PIN, CLEVIS	2
22375	DECAL, S/N, BC, 1.6 X 1.5	1
22433	WASHER, SHOULDER, .38 ID X .75 OD	4
22607	ASSY, CLAMP, BACK, CONTACT HR	1
22608	ASSY, HANDLE, CONTACT HR	1
22637	WASHER, #10 SAE FLAT, ZINC PLATED	4
22663	SCREW, #6 X .50, PHIL TYPE T	4
22903	FOAM, HEART RATE RECEIVER MOUNT	1
22904	COVER, RIGHT, 3000 CE	1
22912	SPACER, THREADED	1
23054	NUT, #8-32, NYLON INSERT	2
23758	SPRING, VALVE	1
23760	RETAINER, SPRING	2
23791	TAPE, SAFETY WALK, 1 IN. WIDE, BLK	2
23792	SADDLE, WIRE	1
23853	TOOL, REMOVAL, COVERS FASTENERS	1
24002	WELDMENT, FRAME, MAIN, 3000CE	1

BOM FOR ASSEMBLY 24912		
COMPONENT	DESCRIPTION	QTY
24019	SNAP RING, INTERNAL, .812 DIA.	1
24031	BELT, POLY-V, 430J8	1
24032	BEARING, BALL, 15MM X 28MM	1
24034	CHAIN, TRANSMISSION	1
24035	SPROCKET, FREE WHEEL	1
24039	SHAFT, SEAT LOCATION	1
24040	WASHER, SEAT LOCATION	1
24042	KNOB, SEAT LOCATION	1
24043	SNAP RING, 1.00 DIA. INTERNAL	1
24044	SPRING, SEAT LOCATION	1
24055	CRANK, BICYCLE, 1 PIECE, MACHINED	1
24057	SPROCKET, CHAIN WHEEL, 52T	1
24066	BUSHING, SEAT SELECTOR	1
24069	SCREW, 8-32X3/8LG, TYP A, PAN/PH	2
24073	NUT, JAM, BOTTOM BRACKET	1
24077	CLAMP, BEARING	2
24078	CLAMP, BEARING, THREADED	2
24079	SCREW, #10-32 UNC, 2.50 LG SOCKET HD	2
24080	COVER, NECK, RIGHT, BLACK	1
24081	COVER, NECK, LEFT	1
24083	SHIELD, CRANK, LEFT	1
24086	ASSY, BEARING NUT, RH	1
24087	ASSY, BEARING NUT, LH	1
24088	WASHER, #10 SPLIT LOCK	2
24125	ASSY, RESISTOR, 3300CE/3900RC	1
24164	WHEEL, 3 IN. DIA.	2
24190	SPACER, COVER BRACKET	2
24198	LINK, MASTER, .125 X .5, BIKE CHAIN	1
24203	SCREW, .375-16 X 4.75, HEX HD CAP	2
24214	CAP, SEAT COVER	1
24221	GROMMET, NECK	1
24224	SLEEVE, ADAPTER, HANDLE	1
24239	BRACKET, CONNECTOR, 3000 CE	1
24246	RACK, READING	1
24271	SCREW, .312-18 X 3.00, HEX HD CAP	1
24279	TYRAP, .14 X 11.0	6
24317	BOLT, J	1
24326	DECAL, DOM COMPLIANCE	1
24361	COVER, LEFT, 3000 CE	1
24386	PULLEY, POLY-V, .12.00 DIA	1
24387	BEARING, BALL, 15MM X 35MM	1
24537	WELDMENT, INT. PIVOT, SPIN. SYS.	1
24542	SHAFT, INTERMEDIATE, SPIN. SYS.	1
24545	SPRING, WAVE	1
24600	STANDOFF, #8 X .50	2
24674	BRACKET, CONSOLE, REMOVABLE	1
24675	RIVNUT, .250-20 UNC	2
24677	KNOB, .25-20 X .50 STUD	2
24911	ASSY, ALTERNATOR FLYWHEEL BRACKET	1
24913	ASSY, MAIN CABLE, 3300 CE	1
24919	DECAL, COVER, SIDE, 3300	2
24986	NUT, #8-32, PEM-NUT	6
25033	SCREW, 8-32 X 1 PHIL PH	2
25064	LABEL, WARNING, BC-1, PWR CONNECT	1
25067	ASSY, BC-1, PS	1
25079	SCREW, 8-32NC X .62 PHIL HD	2
25119	SHIELD, RESISTOR, STRATUS	1
25165	RECEIVER, PLUG-IN, POLAR	1
25172	SCREW, 10-32 X 2.25 HEX, SS	4
25206	SIL PAD	1
25233	TYRAP, .14 X 11.0	1
26144	ASSY, CABLE, PLUG-IN POLAR, 3300	1
90036	SOFTWARE, 3300CE/3900RC, ENG	1
CONSOLE	CONSOLE ASSEMBLY	1

- NOTES:
- LUBRICATE WITH LUBRISOL GREASE: CRANK (24055) AND BALL BEARINGS (24086)(24087), INTERMEDIATE SHAFT (24542) AND BALL BEARINGS (24032)(24387).
 - LUBRICATE WITH 10W-30 WT OIL DRIVE CHAIN (24034).
 - CENTER 6 GROOVE POLY-V BELT (24031) IN MIDDLE OF ALTERNATOR (24911) PULLEY AND CENTERED ON POLY-V (24386) PULLEY.
 - PLACE SIL PAD (13590) BETWEEN (13572) ALUMINUM HEAT SINK AND BRACKET.
 - FIELD DIODE ASSEMBLY INSTALLED BETWEEN FIELD AND GROUND TERMINALS ON ALTERNATOR.
 - INSTALL FOAM (22903) WITH .50 OFFSET DIM TO HOLE DOWN TOWARDS FLOOR.
 - MODEL LEVEL ITEM, REFERENCE MODEL LEVEL BOMS.
 - TYRAP BLACK RESISTOR WIRE (20423) AWAY FROM RESISTOR CORE.
 - MODEL LEVEL ITEM (DOM COMPLIANCE DECAL SHOWN ON BOM FOR REFERENCE)
 - MODEL LEVEL ITEM (GERMAN DISTRIBUTOR DECAL SHOWN ON BOM FOR REFERENCE)
 - MODEL LEVEL ITEM (CHR CONSOLE MOUNT AND HARDWARE SHOWN FOR REFERENCE)
 - MODEL LEVEL ITEM. BATTERY CHARGER FOR RECHARGING ONLY, PACKAGED SEPARATELY AND SHIPPED WITH MACHINE PER MANUFACTURING GUIDELINES. (DOMESTIC SHOWN FOR REFERENCE).
 - MODEL LEVEL ITEM. OWNER'S MANUAL (ENGLISH SHOWN FOR REFERENCE) AND FASTENERS (22086 10X, 23853) TO BE PACKAGED SEPARATELY AND SHIPPED WITH MACHINE PER MANUFACTURING GUIDELINES.
 - MODEL LEVEL ITEM, 120V MACHINES ONLY.
 - TWO OF THE WASHERS (22038) GO ON THE TOP SCREWS (22162), FOUR OF THE WASHERS GO ON THE BOTTOM SCREW.
 - MODEL LEVEL ITEM (EUROPEAN SHOWN FOR REFERENCE). POWER CORD (EUROPE, AUSTRALIA, ITALY, UK, SWISS ONLY) IS FOR INTERNATIONAL APPLICATIONS AS ADDITIONAL NON-INSTALLED PART TO BE USED WITH BATTERY CHARGER (SEE NOTE 12).



SCALE 0.125

14 25064

12

CONFIDENTIAL & PROPRIETARY
THIS DOCUMENT IS THE PROPERTY OF STAIRMASTER SPORTS/MEDICAL PRODUCTS, INC. IT MAY NOT BE REPRODUCED IN WHOLE OR IN PART, PROVIDED TO THIRD PARTIES, OR USED FOR ANY PURPOSE OTHER THAN THE PERFORMANCE OF WORK FOR STAIRMASTER, WITHOUT WRITTEN AUTHORIZATION. ALL RIGHTS ARE RESERVED INCLUDING COPYRIGHTS.

UNLESS OTHERWISE SPECIFIED: 1. DO NOT SCALE DRAWING 2. ALL DIMENSIONS ARE IN INCHES 3. ALL DIMENSIONS APPLY BEFORE PLATING OR COATING 4. REMOVE ALL BURRS BREAK SHARP EDGES .020 MAX ALL MACHINED SURFACES 12.5	DRAFTER JCW 11/20/96
CHECKER	
DSGN. ENGR	
ENGRG. MGR	
MATERIAL	N/A
FINISH	SEE CHART
TOLERANCES	
.X ±.1	ANGLES: BENT #2°
.XX ±.03	MACHINED ±0°30'
.XXX ±.010	

COVER/FINISH CHART		
P/N	DASH #	COVER/FINISH
24912	-00	N/A
	-01	BLACK COVER, WHITE POWDERCOAT
	-11	GREY COVER, WHITE POWDERCOAT
	-03	BLACK COVER, WRINKLE BLACK P/C
	-13	GREY COVER, WRINKLE BLACK P/C

* SUFFIX DETERMINED BY P/N #21501

StairMaster SPORTS/MEDICAL PRODUCTS, INC.

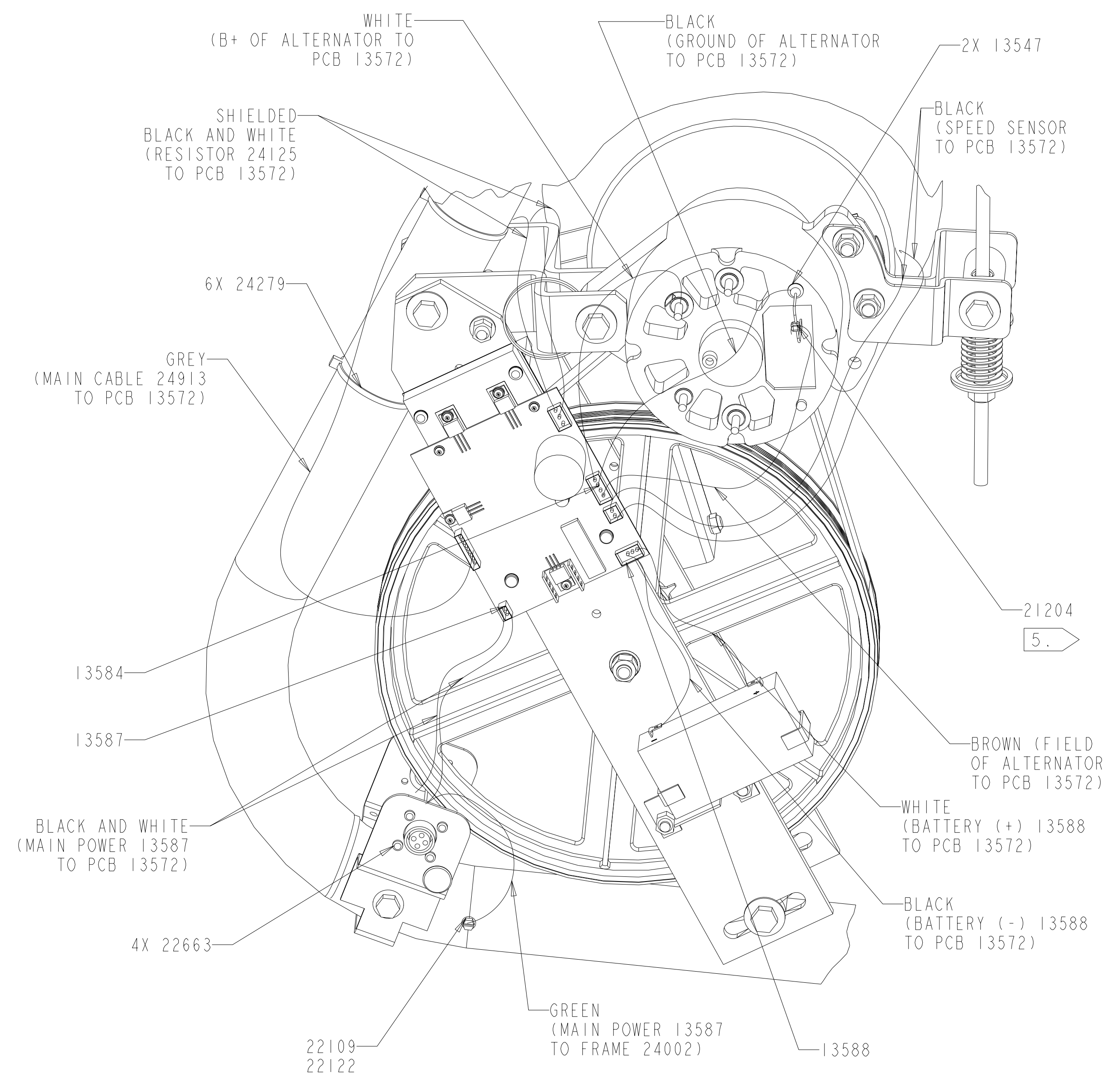
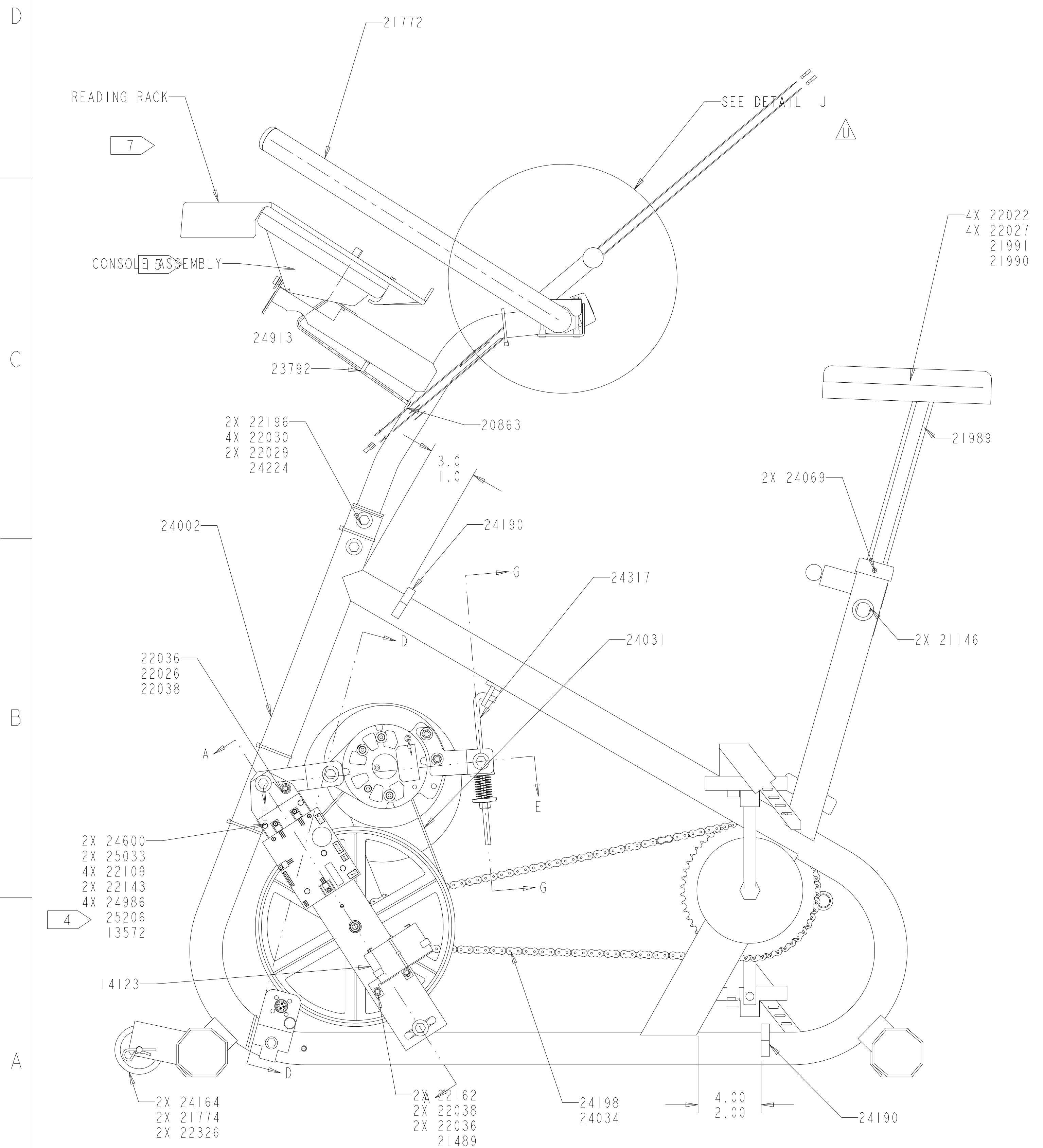
TITLE **ASSEMBLY, FINAL, 3300 CE**

SIZE **D** RELEASED FOR PRODUCTION ECO 3580

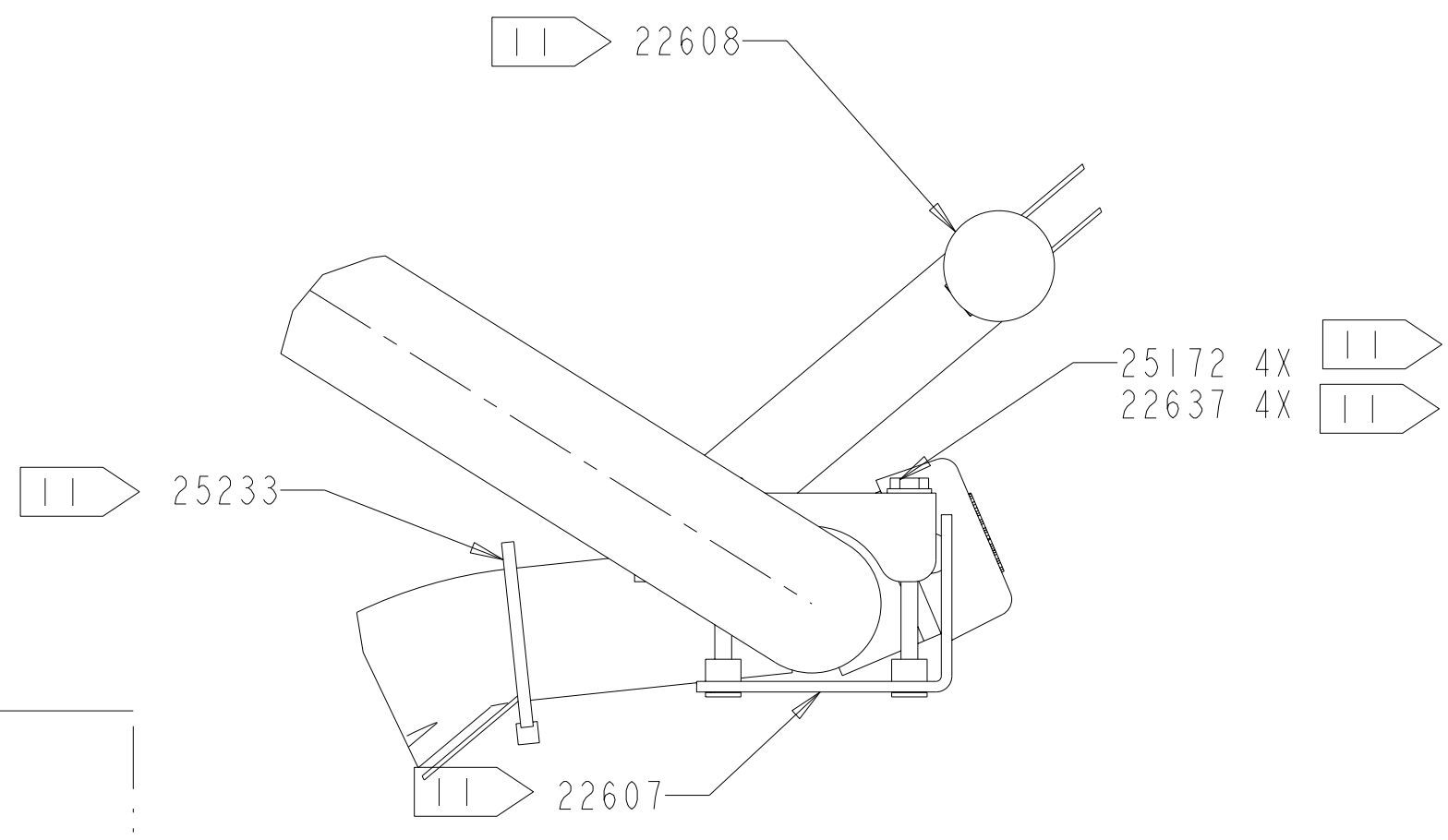
DWG NO: **24912**

SCALE: 0.250 PLOT DATE: 4/20/99 SHEET 1 OF 5

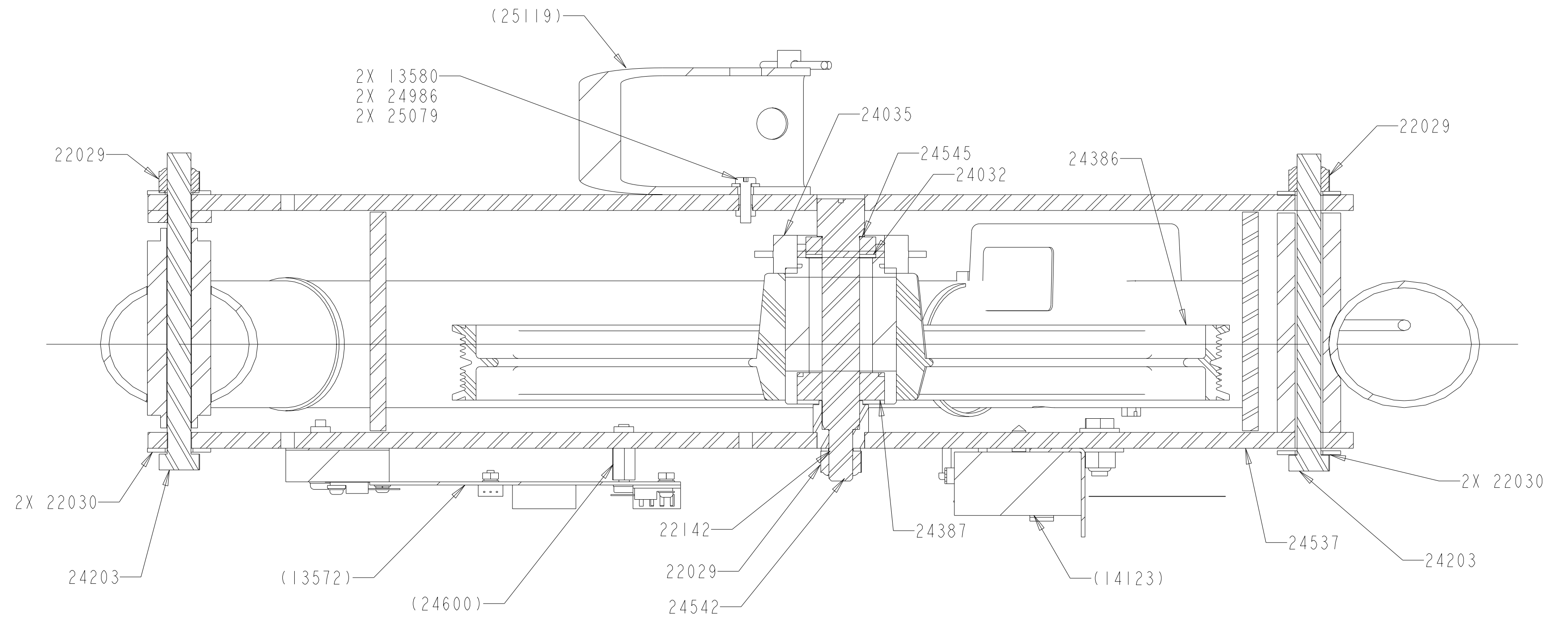
PRO/ENGINEER GENERATED DRAWING FILE NAME: 24912.DRW



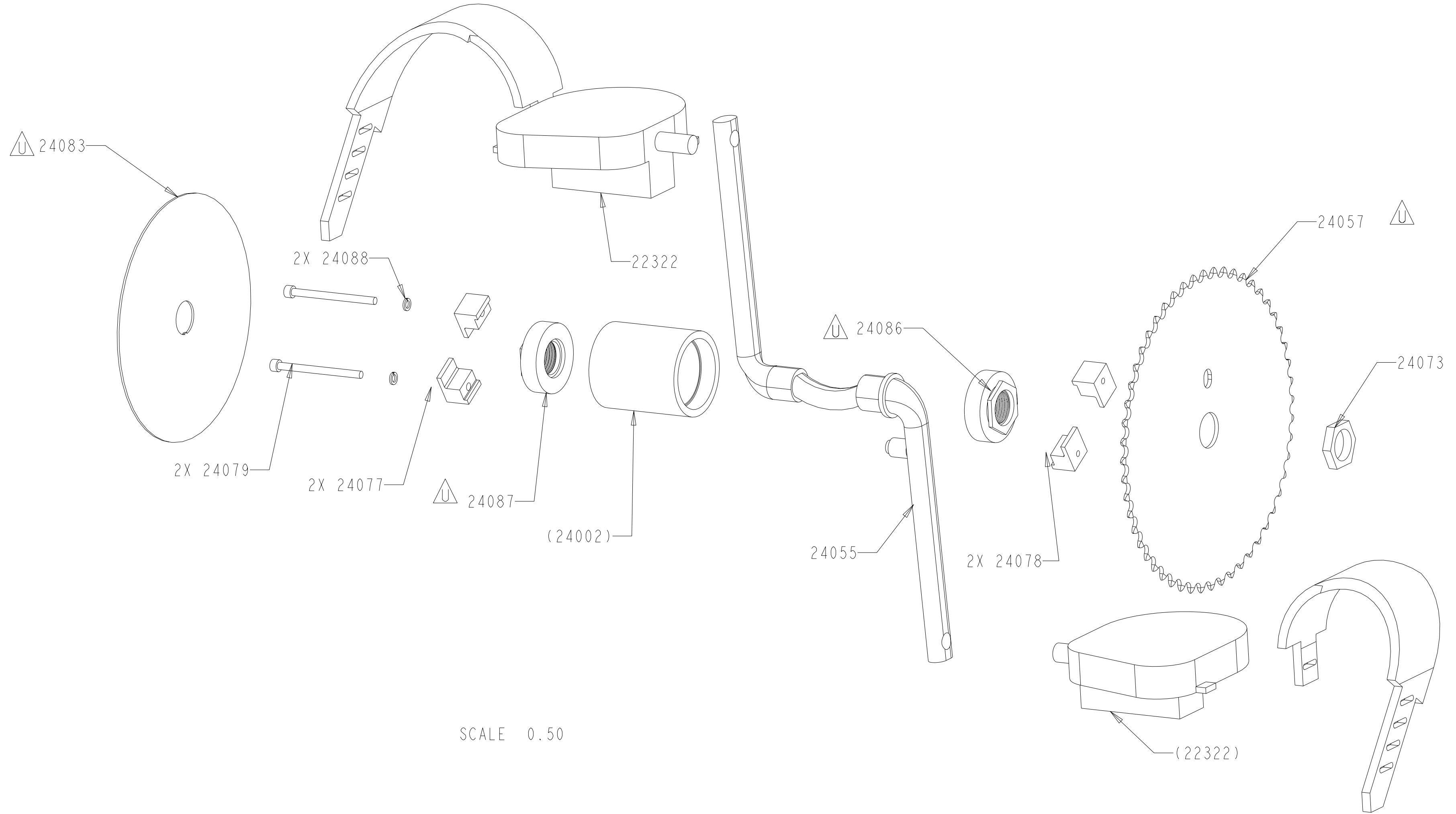
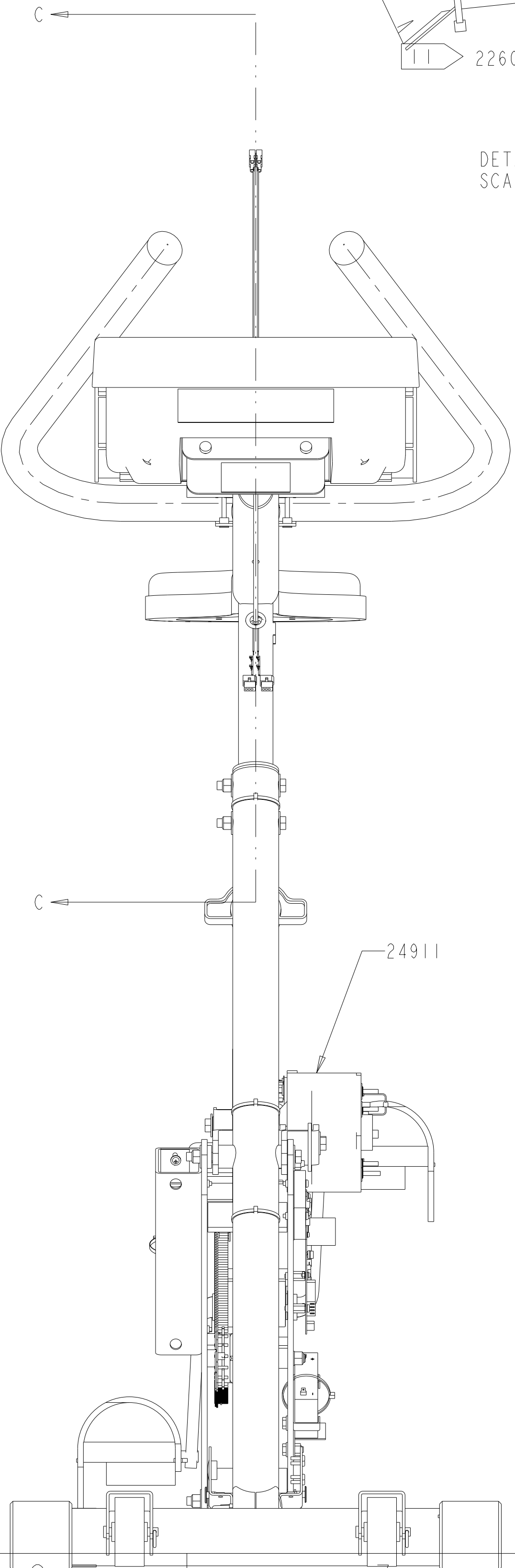
SCALE 0.500



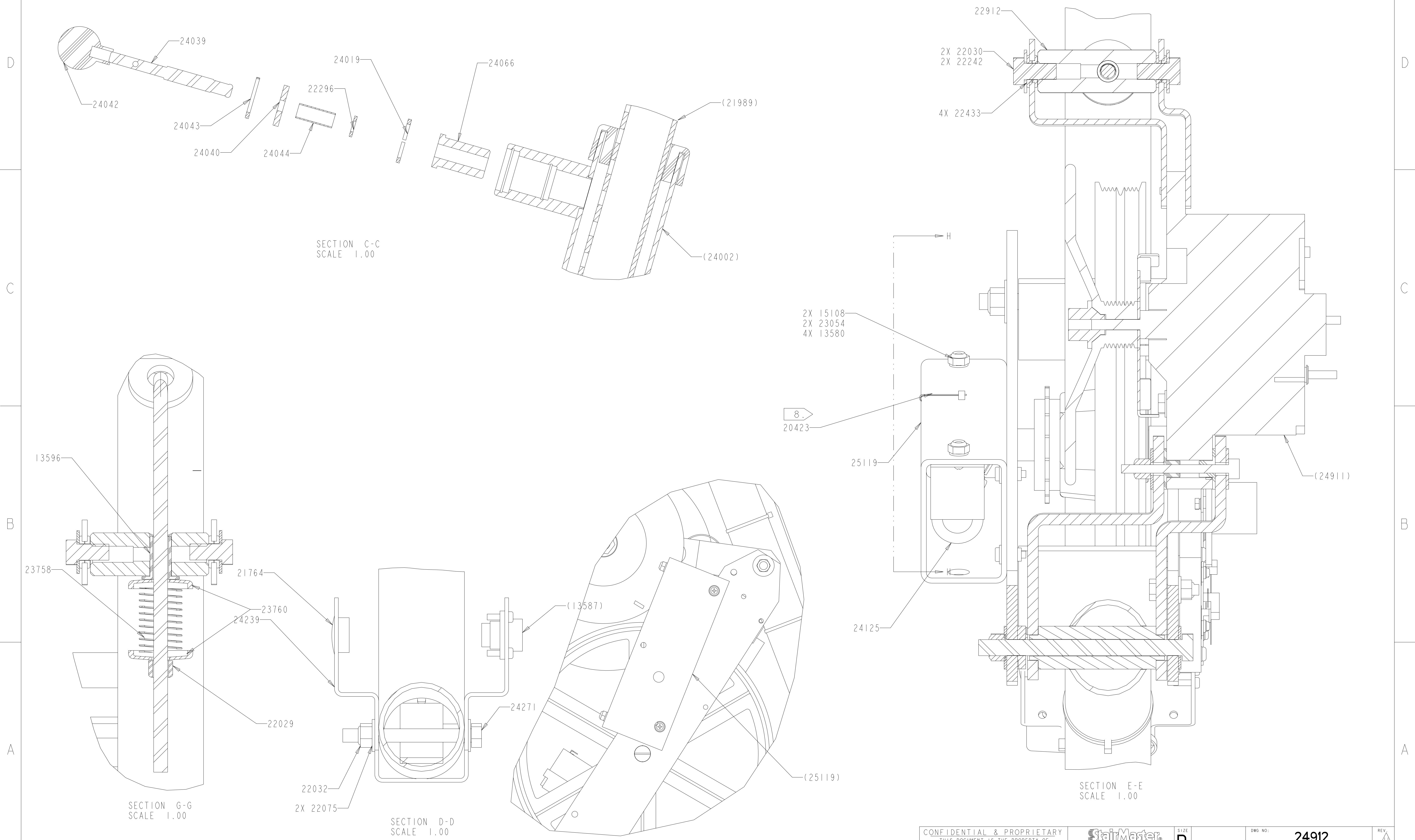
DETAIL J
SCALE 0.500



SECTION A-A
SCALE 0.75

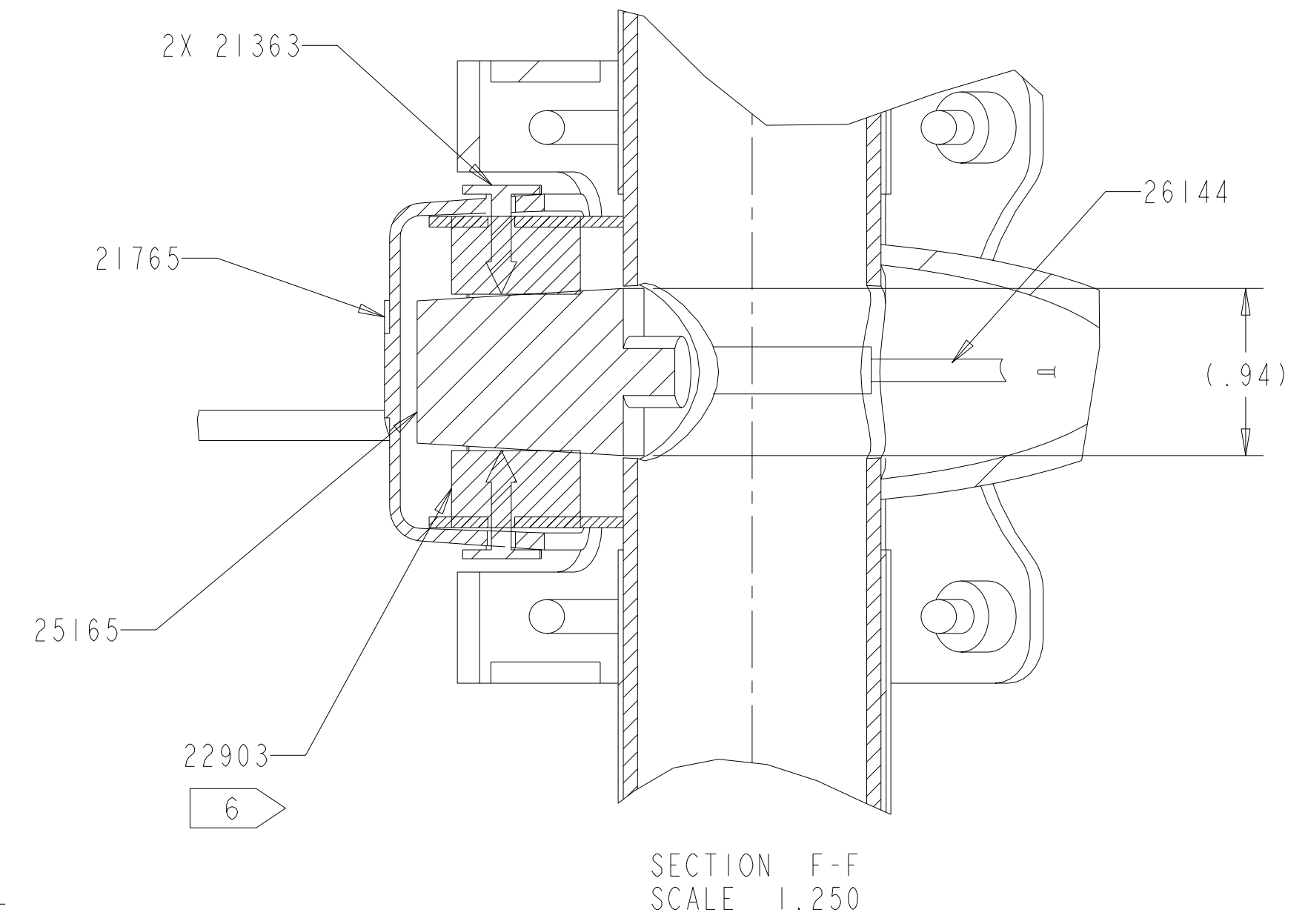
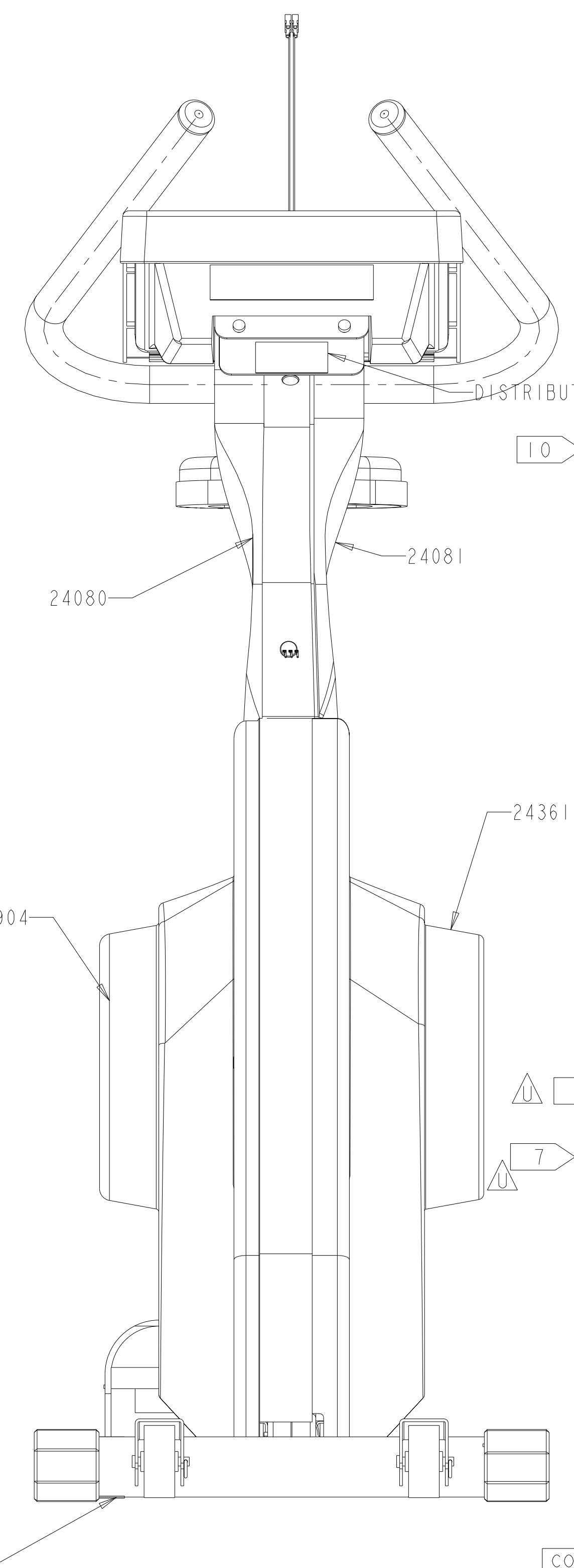
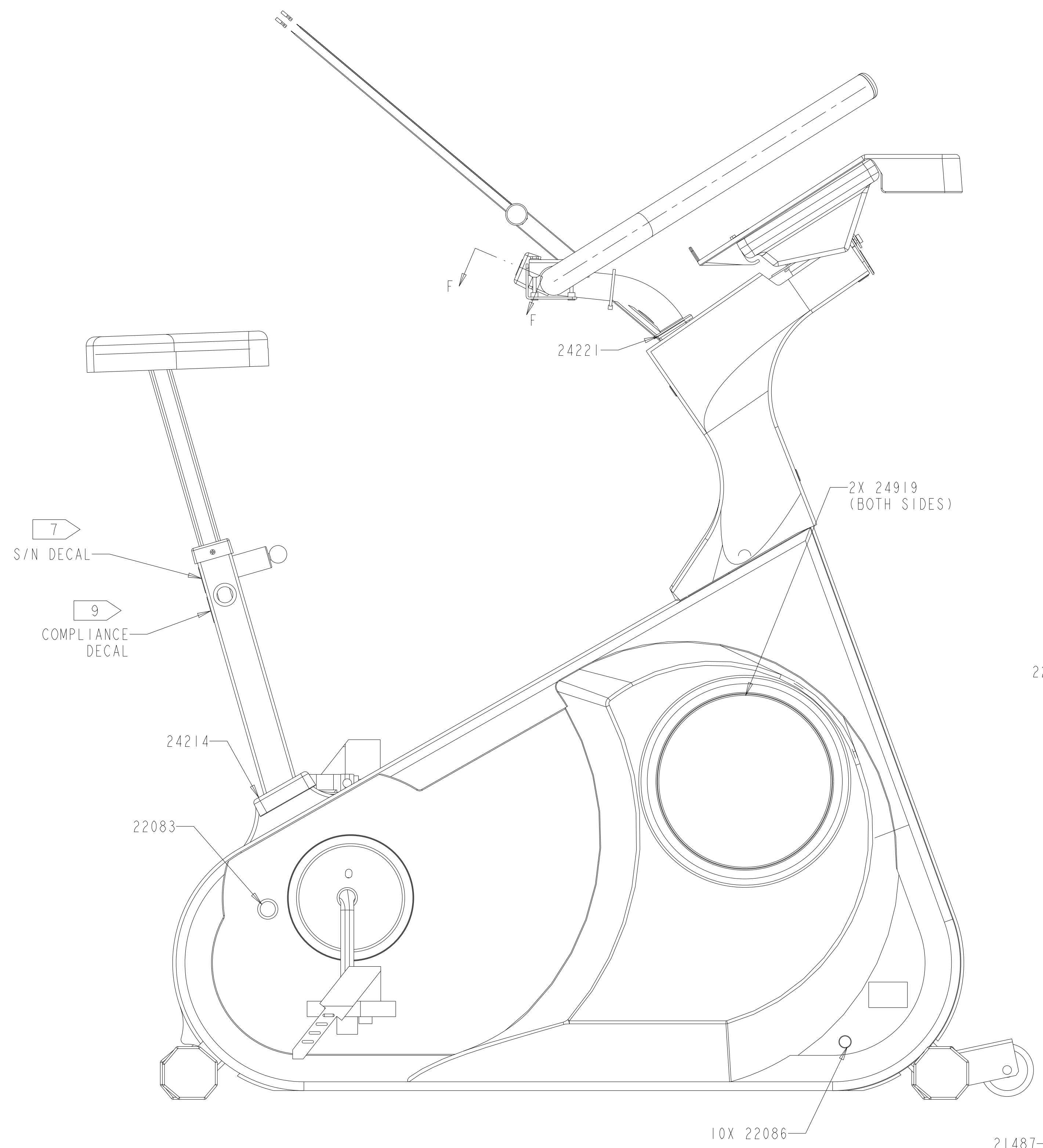


SCALE 0.50



D
C
B
A

D
C
B
A



(LEG LEVELING DECAL TO BE PLACED REAR SIDE OF TUBE)

CONFIDENTIAL & PROPRIETARY THIS DOCUMENT IS THE PROPERTY OF STAIRMASTER SPORTS/MEDICAL PRODUCTS, INC. (SEE SHEET 1 FOR FULL TEXT)			SIZE D	DWG NO: 24912	REV.
DRAFTER	SCALE: 0.250	PLOT DATE: 4/20/99	SHEET 5 OF 5		
PRO/ENGINEER GENERATED DRAWING FILE NAME: 24912.DRW					